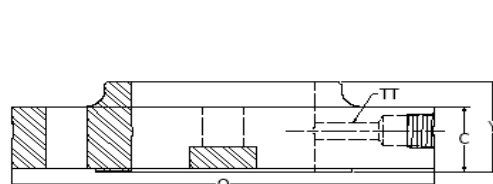
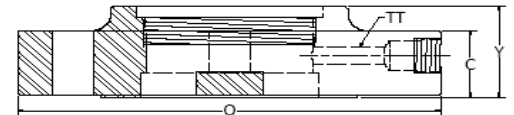


RF Weld Neck Orifice Flange



RF Slip-On Orifice Flange (Class 300 Only)



RF Threaded Orifice Flange (Class 300 Only)

**Class 300 Flanges ‡**

Nominal Pipe Size	O.D.		Length Through Hub		Dia. Of Thru Hole	Drilling Template		
	O	C	Slip-On And Thread	Weld Neck		Bolt Circle	# Of Holes	Dia. Of Holes
	O	C	Y2	Y1				
1.00	124.0	38.1	47.8	82.6	1/4	88.9	4	17.5
1.50	155.4	38.1	47.8	85.9	1/4	114.3	4	20.6
2.00	165.1	38.1	49.3	85.9	1/4	127.0	8	17.5
2.50	190.5	38.1	50.8	88.9	1/4	149.4	8	20.6
3.00	209.6	38.1	52.3	88.9	3/8	168.1	8	20.6
4.00	254.0	38.1	53.8	91.9	1/2	200.2	8	20.6
6.00	317.5	38.1	53.8	100.1	1/2	269.7	12	22.4
8.00	381.0	41.1	62.0	111.3	1/2	330.2	12	25.4
10.00	444.5	47.8	66.5	117.3	1/2	387.4	16	28.4
12.00	520.7	50.8	73.2	130.0	1/2	450.9	16	31.8
14.00	584.2	53.8	76.2	142.7	1/2	514.4	20	31.8
16.00	647.7	57.2	82.6	146.1	1/2	571.5	20	35.1
18.00	711.2	60.5	88.9	158.8	1/2	628.7	24	35.1
20.00	774.7	63.5	95.3	162.1	1/2	685.8	24	35.1
24.00	914.4	69.9	104.1	168.1	1/2	812.8	24	41.1

**Class 400 Flanges ▲, .06" Face (1" - 3")**

O.D.	Flange Thk.	Length Through Hub		Dia. Of Thru Hole	Drilling Template			
		Slip-On And Thread	Weld Neck		Bolt Circle	# Of Holes	Dia. Of Holes (RF)	Dia. Of Holes (RTJ)
		Y2	Y1					
124.0	36.6	...	82.6	1/4	88.9	4	17.5	19.1
155.4	36.6	...	85.9	1/4	114.3	4	20.6	22.4
165.1	36.6	...	85.9	1/4	127.0	8	17.5	19.1
190.5	36.6	...	88.9	1/4	149.4	8	20.6	22.4
209.6	36.6	...	88.9	3/8	168.1	8	20.6	22.4
254.0	38.1	...	88.9	1/2	200.2	8	25.4	25.4
317.5	41.1	...	103.1	1/2	269.7	12	28.4	28.4
381.0	47.8	...	117.3	1/2	330.2	12	31.8	31.8
444.5	53.8	...	124.0	1/2	387.4	16	35.1	35.1
520.7	57.2	...	136.7	1/2	450.9	16	35.1	35.1
584.2	60.7	...	149.4	1/2	514.4	20	38.1	38.1
647.7	63.5	...	152.4	1/2	571.5	20	41.1	41.1
711.2	66.5	...	165.1	1/2	628.7	24	44.5	44.5
774.7	69.9	...	168.1	1/2	685.8	24	44.5	44.5
914.4	76.2	...	174.8	1/2	812.8	24	50.8	50.8

**Class 600 Flanges ▲, .06" Face (1" - 3")**

O.D.	Flange Thk.	Length Through Hub		Dia. Of Thru Hole	Drilling Template			
		Slip-On And Thread	Weld Neck		Bolt Circle	# Of Holes	Dia. Of Holes (RF)	Dia. Of Holes (RTJ)
		Y2	Y1					
124.0	36.6	...	82.6	1/4	88.9	4	17.5	19.1
155.4	36.6	...	85.9	1/4	114.3	4	20.6	22.4
165.1	36.6	...	85.9	1/4	127.0	8	17.5	19.1
190.5	36.6	...	88.9	1/4	149.4	8	20.6	22.4
209.6	36.6	...	88.9	3/8	168.1	8	20.6	22.4
273.1	38.1	...	101.6	1/2	215.9	8	25.4	25.4
355.6	47.8	...	117.3	1/2	292.1	12	28.4	28.4
419.1	55.6	...	133.4	1/2	349.3	12	31.8	31.8
508.0	63.5	...	152.4	1/2	431.8	16	45.7	45.7
558.8	66.5	...	155.4	1/2	489.0	20	35.1	35.1
603.3	69.9	...	165.1	1/2	527.1	20	38.1	38.1
685.8	76.2	...	177.8	1/2	603.3	20	41.1	41.1
743.0	82.6	...	184.2	1/2	654.1	20	44.5	44.5
812.8	88.9	...	190.5	1/2	723.9	24	44.5	44.5
939.8	101.6	...	203.2	1/2	838.2	24	50.8	50.8

**Class 900 Flanges ▲**

Nominal Pipe Size	O.D.		Length Through Hub		Dia. Of Thru Hole	Drilling Template		
	O	C	Slip-On And Thread	Weld Neck		Bolt Circle	# Of Holes	Dia. Of Holes
	O	C	Y2	Y1				
1.00	149.4	38.1	...	82.6	1/4	101.6	4	25.4
1.50	177.8	38.1	...	88.9	1/4	124.0	4	28.4
2.00	215.9	38.1	...	101.6	1/4	165.1	8	25.4
2.50	244.3	41.1	...	104.6	1/4	190.5	8	28.4
3.00	241.3	38.1	...	101.6	3/8	190.5	8	25.4
4.00	292.1	44.5	...	114.3	1/2	235.0	8	31.8
6.00	381.0	55.6	...	139.7	1/2	317.5	12	31.8
8.00	469.9	63.5	...	162.1	1/2	393.7	12	38.1
10.00	546.1	69.9	...	184.2	1/2	469.9	16	38.1
12.00	609.6	79.2	...	200.2	1/2	533.4	20	38.1
14.00	641.4	85.9	...	212.9	1/2	558.8	20	41.1
16.00	704.9	88.9	...	215.9	1/2	616.0	20	44.5
18.00	787.4	101.6	...	228.6	1/2	685.8	20	50.8
20.00	857.3	108.0	...	247.7	1/2	749.3	20	53.8
24.00	1041.4	139.7	...	292.1	1/2	901.7	20	66.5

**Class 1500 Flanges ▲**

O.D.	Flange Thk.	Length Through Hub		Dia. Of Thru Hole	Drilling Template		
		Slip-On And Thread	Weld Neck		Bolt Circle	# Of Holes	Dia. Of Holes
		Y2	Y1				
149.4	38.1	...	82.6	1/4	101.6	4	25.4
177.8	38.1	...	88.9	1/4	124.0	4	28.4
215.9	38.1	...	101.6	1/4	165.1	8	25.4
244.3	41.1	...	104.6	1/4	190.5	8	28.4
266.7	47.8	...	117.3	3/8	203.2	8	31.8
311.2	53.8	...	124.0	1/2	235.0	8	35.1
393.7	82.6	...	171.5	1/2	317.5	12	38.1
482.6	91.9	...	212.9	1/2	393.7	12	44.5
584.2	108.0	...	254.0	1/2	482.6	12	50.8
673.1	124.0	...	282.4	1/2	571.5	16	53.8
749.3	133.4	...	298.5	1/2	635.0	16	60.5
825.5	146.1	...	311.2	1/2	704.9	16	66.5
914.4	162.1	...	327.2	1/2	774.7	16	73.2
984.3	177.8	...	355.6	1/2	831.9	16	79.2
1168.4	203.2	...	406.4	1/2	990.6	16	91.9

**Class 2500 Flanges ▲**

O.D.	Flange Thk.	Length Through Hub		Dia. Of Thru Hole	Drilling Template		
		Slip-On And Thread	Weld Neck		Bolt Circle	# Of Holes	Dia. Of Holes
		Y2	Y1				
158.8	38.1	...	91.9	1/4	108.0	4	25.4
203.2	44.5	...	111.3	1/4	146.1	4	31.8
235.0	50.8	...	127.0	1/4	171.5	8	28.4
266.7	57.2	...	142.7	1/4	196.9	8	31.8
304.8	66.5	...	168.1	3/8	228.6	8	35.1
355.6	76.2	...	190.5	1/2	273.1	8	41.1
482.6	108.0	...	273.1	1/2	368.3	8	53.8
552.5	127.0	...	317.5	1/2	438.2	12	53.8
673.1	165.1	...	419.1	1/2	539.8	12	66.5
762.0	184.2	...	484.2	1/2	619.3	12	73.2
...	...	...	...	...	...	...	...
...	...	...	...	...	...	...	...
...	...	...	...	...	...	...	...
...	...	...	...	...	...	...	...
...	...	...	...	...	...	...	...
...	...	...	...	...	...	...	...

‡ RAISED FACE FLANGES ARE FURNISHED WITH .06" FACE HEIGHT. ("C" AND "Y" DIMENSIONS INCLUDE FACE HEIGHT)  
 ▲ RAISED FACE FLANGES ARE FURNISHED WITH .25" FACE HEIGHT. ("C" AND "Y" DIMENSIONS DO NOT INCLUDE FACE HEIGHT)  
 Dimensions A, R, X Are Identical To ASME B16.5