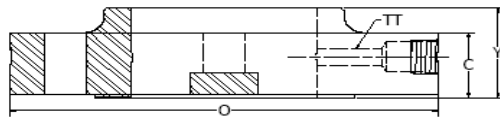
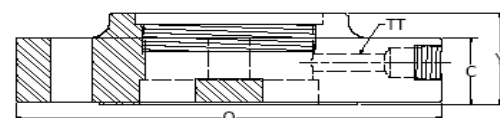


RF Weld Neck Orifice Flange



RF Slip-On Orifice Flange (Class 300 Only)



RF Threaded Orifice Flange (Class 300 Only)

Class 300 Flanges ‡

Nominal Pipe Size	O.D.		Length Through Hub		Dia. Of Thru Hole	Drilling Template		
	O	C	Slip-On And Thread Y2	Weld Neck Y1		Bolt Circle	# Of Holes	Dia. Of Holes
	TT							
1.00	4.88	1.50	1.88	3.25	1/4	3.50	4	0.69
1.50	6.12	1.50	1.88	3.38	1/4	4.50	4	0.81
2.00	6.50	1.50	1.94	3.38	1/4	5.00	8	0.69
2.50	7.50	1.50	2.00	3.50	1/4	5.88	8	0.81
3.00	8.25	1.50	2.06	3.50	3/8	6.62	8	0.81
4.00	10.00	1.50	2.12	3.62	1/2	7.88	8	0.81
6.00	12.50	1.50	2.12	3.94	1/2	10.62	12	0.88
8.00	15.00	1.62	2.44	4.38	1/2	13.00	12	1.00
10.00	17.50	1.88	2.62	4.62	1/2	15.25	16	1.12
12.00	20.50	2.00	2.88	5.12	1/2	17.75	16	1.25
14.00	23.00	2.12	3.00	5.62	1/2	20.25	20	1.25
16.00	25.50	2.25	3.25	5.75	1/2	22.50	20	1.38
18.00	28.00	2.38	3.50	6.25	1/2	24.75	24	1.38
20.00	30.50	2.50	3.75	6.38	1/2	27.00	24	1.38
24.00	36.00	2.75	4.10	6.62	1/2	32.00	24	1.62

Class 400 Flanges ▲, .06" Face (1" - 3")

O.D.	Flange Thk.	Length Through Hub		Dia. Of Thru Hole	Drilling Template			
		Slip-On And Thread Y2	Weld Neck Y1		Bolt Circle	# Of Holes	Dia. Of Holes (RF)	Dia. Of Holes (RTJ)
		TT						
4.88	1.44	...	3.25	1/4	3.50	4	0.69	0.75
6.12	1.44	...	3.38	1/4	4.50	4	0.81	0.88
6.50	1.44	...	3.38	1/4	5.00	8	0.69	0.75
7.50	1.44	...	3.50	1/4	5.88	8	0.81	0.88
8.25	1.44	...	3.50	3/8	6.62	8	0.81	0.88
10.00	1.50	...	3.50	1/2	7.88	8	1.00	1.00
12.50	1.62	...	4.06	1/2	10.62	12	1.12	1.12
15.00	1.88	...	4.62	1/2	13.00	12	1.25	1.25
17.50	2.12	...	4.88	1/2	15.25	16	1.38	1.38
20.50	2.25	...	5.38	1/2	17.75	16	1.38	1.38
23.00	2.39	...	5.88	1/2	20.25	20	1.50	1.50
25.50	2.50	...	6.00	1/2	22.50	20	1.62	1.62
28.00	2.62	...	6.50	1/2	24.75	24	1.75	1.75
30.50	2.75	...	6.62	1/2	27.00	24	1.75	1.75
36.00	3.00	...	6.88	1/2	32.00	24	2.00	2.00

Class 600 Flanges ▲, .06" Face (1" - 3")

O.D.	Flange Thk.	Length Through Hub		Dia. Of Thru Hole	Drilling Template			
		Slip-On And Thread Y2	Weld Neck Y1		Bolt Circle	# Of Holes	Dia. Of Holes (RF)	Dia. Of Holes (RTJ)
		TT						
4.88	1.44	...	3.25	1/4	3.50	4	0.69	0.75
6.12	1.44	...	3.38	1/4	4.50	4	0.81	0.88
6.50	1.44	...	3.38	1/4	5.00	8	0.69	0.75
7.50	1.44	...	3.50	1/4	5.88	8	0.81	0.88
8.25	1.44	...	3.50	3/8	6.62	8	0.81	0.88
10.75	1.50	...	4.00	1/2	8.50	8	1.00	1.00
14.00	1.88	...	4.62	1/2	11.50	12	1.12	1.12
16.50	2.19	...	5.25	1/2	13.75	12	1.25	1.25
20.00	2.50	...	6.00	1/2	17.00	16	1.80	1.80
22.00	2.62	...	6.12	1/2	19.25	20	1.38	1.38
23.75	2.75	...	6.50	1/2	20.75	20	1.50	1.50
27.00	3.00	...	7.00	1/2	23.75	20	1.62	1.62
29.25	3.25	...	7.25	1/2	25.75	20	1.75	1.75
32.00	3.50	...	7.50	1/2	28.50	24	1.75	1.75
37.00	4.00	...	8.00	1/2	33.00	24	2.00	2.00

Class 900 Flanges ▲

Nominal Pipe Size	O.D.		Length Through Hub		Dia. Of Thru Hole	Drilling Template		
	O	C	Slip-On And Thread Y2	Weld Neck Y1		Bolt Circle	# Of Holes	Dia. Of Holes
	TT							
1.00	5.88	1.50	...	3.25	1/4	4.00	4	1.00
1.50	7.00	1.50	...	3.50	1/4	4.88	4	1.12
2.00	8.50	1.50	...	4.00	1/4	6.50	8	1.00
2.50	9.62	1.62	...	4.12	1/4	7.50	8	1.12
3.00	9.50	1.50	...	4.00	3/8	7.50	8	1.00
4.00	11.50	1.75	...	4.50	1/2	9.25	8	1.25
6.00	15.00	2.19	...	5.50	1/2	12.50	12	1.25
8.00	18.50	2.50	...	6.38	1/2	15.50	12	1.50
10.00	21.50	2.75	...	7.25	1/2	18.50	16	1.50
12.00	24.00	3.12	...	7.88	1/2	21.00	20	1.50
14.00	25.25	3.38	...	8.38	1/2	22.00	20	1.62
16.00	27.75	3.50	...	8.50	1/2	24.25	20	1.75
18.00	31.00	4.00	...	9.00	1/2	27.00	20	2.00
20.00	33.75	4.25	...	9.75	1/2	29.50	20	2.12
24.00	41.00	5.50	...	11.50	1/2	35.50	20	2.62

Class 1500 Flanges ▲

O.D.	Flange Thk.	Length Through Hub		Dia. Of Thru Hole	Drilling Template		
		Slip-On And Thread Y2	Weld Neck Y1		Bolt Circle	# Of Holes	Dia. Of Holes
		TT					
5.88	1.50	...	3.25	1/4	4.00	4	1.00
7.00	1.50	...	3.50	1/4	4.88	4	1.12
8.50	1.50	...	4.00	1/4	6.50	8	1.00
9.62	1.62	...	4.12	1/4	7.50	8	1.12
10.50	1.88	...	4.62	3/8	8.00	8	1.25
12.25	2.12	...	4.88	1/2	9.25	8	1.38
15.50	3.25	...	6.75	1/2	12.50	12	1.50
19.00	3.62	...	8.38	1/2	15.50	12	1.75
23.00	4.25	...	10.00	1/2	19.00	12	2.00
26.50	4.88	...	11.12	1/2	22.50	16	2.12
29.50	5.25	...	11.75	1/2	25.00	16	2.38
32.50	5.75	...	12.25	1/2	27.75	16	2.62
36.00	6.38	...	12.88	1/2	30.50	16	2.88
38.75	7.00	...	14.00	1/2	32.75	16	3.12
46.00	8.00	...	16.00	1/2	39.00	16	3.62

Class 2500 Flanges ▲

O.D.	Flange Thk.	Length Through Hub		Dia. Of Thru Hole	Drilling Template		
		Slip-On And Thread Y2	Weld Neck Y1		Bolt Circle	# Of Holes	Dia. Of Holes
		TT					
6.25	1.50	...	3.62	1/4	4.25	4	1.00
8.00	1.75	...	4.38	1/4	5.75	4	1.25
9.25	2.00	...	5.00	1/4	6.75	8	1.12
10.50	2.25	...	5.62	1/4	7.75	8	1.25
12.00	2.62	...	6.62	3/8	9.00	8	1.38
14.00	3.00	...	7.50	1/2	10.75	8	1.62
19.00	4.25	...	10.75	1/2	14.50	8	2.12
21.75	5.00	...	12.50	1/2	17.25	12	2.12
26.50	6.50	...	16.50	1/2	21.25	12	2.62
30.00	7.25	...	7.25	1/2	24.38	12	2.88
...
...
...
...
...

‡ RAISED FACE FLANGES ARE FURNISHED WITH .06" FACE HEIGHT. ("C" AND "Y" DIMENSIONS INCLUDE FACE HEIGHT)
 ▲ RAISED FACE FLANGES ARE FURNISHED WITH .25" FACE HEIGHT. ("C" AND "Y" DIMENSIONS DO NOT INCLUDE FACE HEIGHT)
 Dimensions A, R, X Are Identical To ASME B16.5